

SUC 200

Normal-Duty Ball Bearing
Setscrew Lock

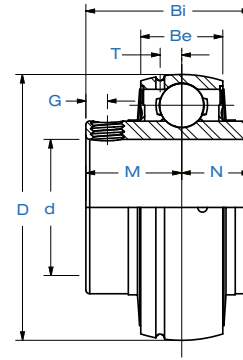
Seal
Styles



Standard Seal
with Flinger



Triple-Lip
L3 Seal



Bearing Insert	Shaft Dia.	Setscrew Used	Dimensions in. mm.							Load Rating lbs. kN.		Weight
	d in. mm.	in. mm.	D	Bi	Be	N	M	G	T	Dynamic Cr	Static Cor	lbs. kg.
SUC 201	12	M6 x 0.75										
SUC 201-8	1/2	1/4-28										
SUC 202	15	M6 x 0.75	1.8504	1.2205	0.6693	0.5000	0.7205	0.1850	0.1575	2,331	1,142	0.4
SUC 202-10	5/8	1/4-28	47.0	31.0	17.0	12.7	18.3	4.7	4.0	10.37	5.08	0.2
SUC 203	17	M6 x 0.75										
SUC 204-12	3/4	1/4-28										
SUC 204	20	M6 x 0.75										
SUC 205-14	7/8	1/4-28										
SUC 205-15	15/16	1/4-28	2.0472	1.3425	0.6693	0.5630	0.7795	0.1969	0.1654	2,542	1,349	0.5
SUC 205	25	M6 x 0.75	52.0	34.1	17.0	14.3	19.8	5.0	4.2	11.31	6.00	0.2
SUC 205-16	1	1/4-28										
SUC 206-17	1 1/16	1/4-28										
SUC 206-18	1 1/8	1/4-28										
SUC 206	30	M6 x 0.75	2.4409	1.5000	0.7480	0.6260	0.8740	0.1969	0.1969	3,554	1,942	0.8
SUC 206-19	1 3/16	1/4-28	62.0	38.1	19.0	15.9	22.2	5.0	5.0	15.81	8.64	0.4
SUC 206-20	1 1/4	1/4-28										
SUC 207-20	1 1/4	5/16-24										
SUC 207-21	1 5/16	5/16-24										
SUC 207-22	1 3/8	5/16-24	2.8346	1.6890	0.7874	0.6890	1.0000	0.2362	0.2244	4,683	2,626	1.1
SUC 207	35	M8 x 1	72.0	42.9	20.0	17.5	25.4	6.0	5.7	20.83	11.68	0.5
SUC 207-23	1 7/16	5/16-24										
SUC 208-24	1 1/2	5/16-24	3.1496	1.9370	0.8268	0.7480	1.1890	0.3150	0.2480	5,294	3,057	1.4
SUC 208-25	1 9/16	5/16-24	80.0	49.2	21.0	19.0	30.2	8.0	6.3	23.55	13.60	0.6
SUC 208	40	M8 x 1										
SUC 209-26	1 5/8	5/16-24										
SUC 209-27	1 11/16	5/16-24	3.3465	1.9370	0.8661	0.7480	1.1890	0.3150	0.2480	5,923	3,507	1.6
SUC 209-28	1 3/4	5/16-24	85.0	49.2	22.0	19.0	30.2	8.0	6.3	26.35	15.60	0.7
SUC 209	45	M8 x 1										
SUC 210-30	1 7/8	3/8-24										
SUC 210-31	1 15/16	3/8-24	3.5433	2.0315	0.9449	0.7480	1.2835	0.3937	0.2598	6,402	4,046	1.8
SUC 210	50	M10 x 1.25	90.0	51.6	24.0	19.0	32.6	10.0	6.6	28.48	18.00	0.8
SUC 210-32	2	3/8-24										
SUC 211-32	2	3/8-24										
SUC 211-34	2 1/8	3/8-24	3.9370	2.1890	0.9843	0.8740	1.3150	0.3937	0.2756	7,931	5,036	2.4
SUC 211	55	M10 x 1.25	100.0	55.6	25.0	22.2	33.4	10.0	7.0	35.28	22.40	1.1
SUC 211-35	2 3/16	3/8-24										
SUC 212-36	2 1/4	3/8-24										
SUC 212	60	M10 x 1.25	4.3307	2.5630	1.0630	1.0000	1.5630	0.3937	0.2756	9,554	5,921	3.3
SUC 212-38	2 3/8	3/8-24	110.0	65.1	27.0	25.4	39.7	10.0	7.0	42.50	26.34	1.5
SUC 212-39	2 7/16	3/8-24										

MARINER®